

# Introduction to Promethean Boards

SAU 19 – Goffstown and New Boston



# What is a Promethean Board?

A Promethean Board is an interactive whiteboard that allows you to project images, websites, or videos directly from a laptop or computer. Utilizing touch technology and/or specialized pens along with built-in tools, users can annotate directly on what is being presented. Software includes an interactive whiteboard, annotation tools, a timer, a choice spinner, and more. Promethean Boards also work in conjunction with ActivInspire software.

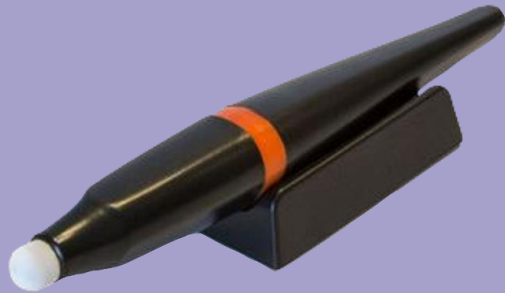
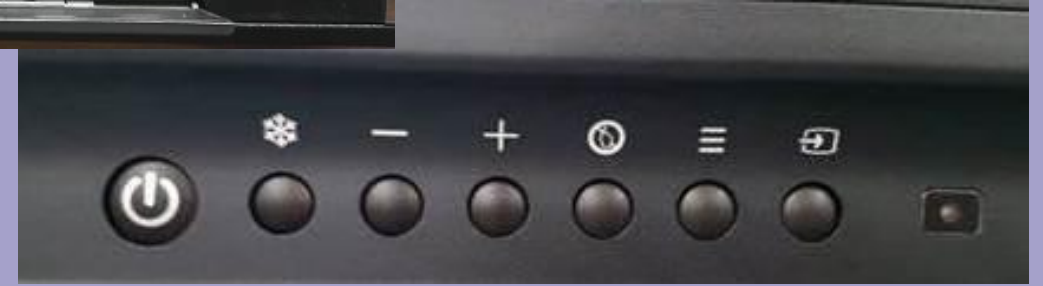


# Getting to Know Your Promethean Board



Remote Control

Screen Freeze Button



Interactive Pen Tool



On/Off Button



Menu Button



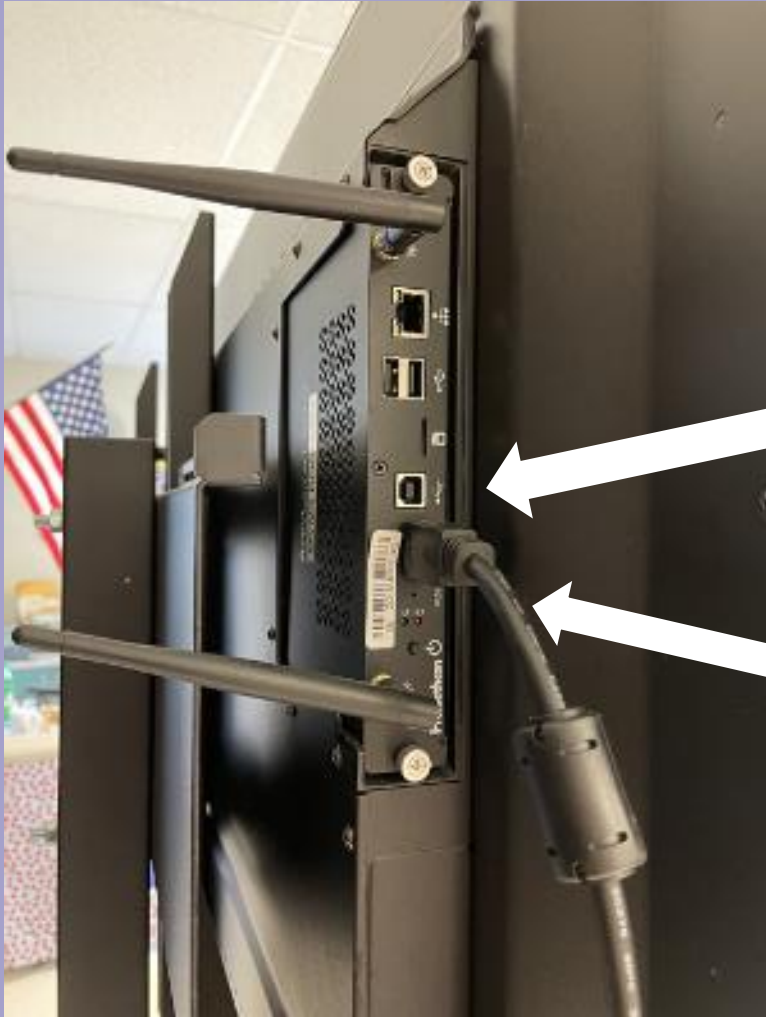
Source Input Button



Volume Button



# Connecting to Your Promethean Board (Hard Wired)

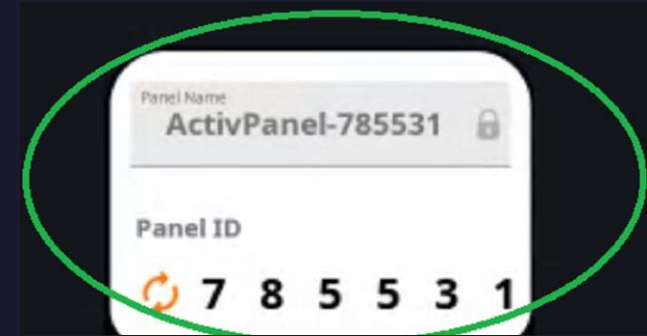


The touch cable will connect to the 'Touch' Port on the 'OPS/PC' box or in the 'Touch' port on the bottom panel of your Promethean Board. The USB end will connect to the 'USB' port on your laptop.



The HDMI cable will attach to the 'OPS/PC' box on the side of the board in the 'HDMI In' port or on the 'HDMI In' port on the bottom panel of your Promethean Board. It will then connect directly into your HDMI port on your laptop.

# Connecting to Your Promethean Board (Screen Share)



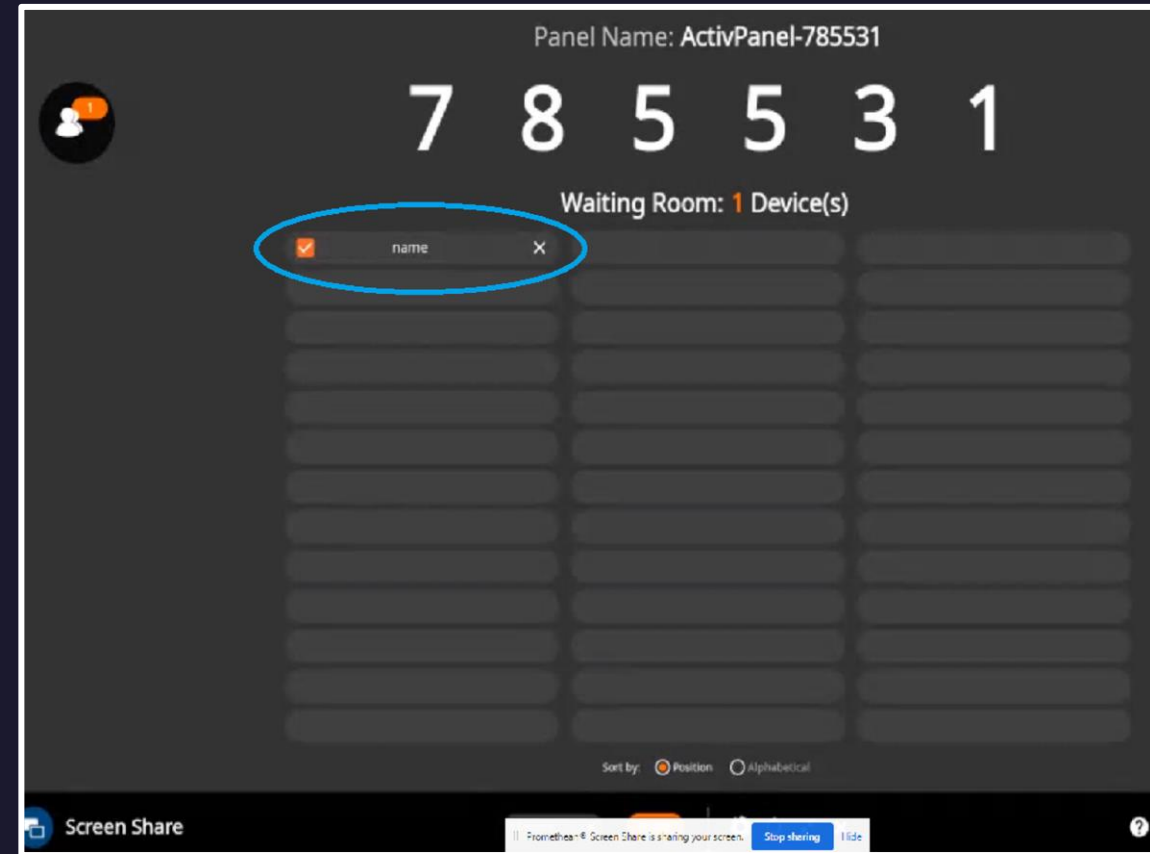
Locate the **Screen Share** application on both your laptop and your Promethean Board and open them.

The **ActivPanel Panel ID** will appear on the Promethean Board.

Enter the **Panel ID** into your laptop **Screen Share** application

Your laptop will enter the waiting room on your Promethean Board, click on it to share your screen.

To end your share, click the blue **'End Share'** button at the bottom of the screen.



# Promethean Board Menu

**A. Back** - return to previous screen

**B. Home** - return to the home screen

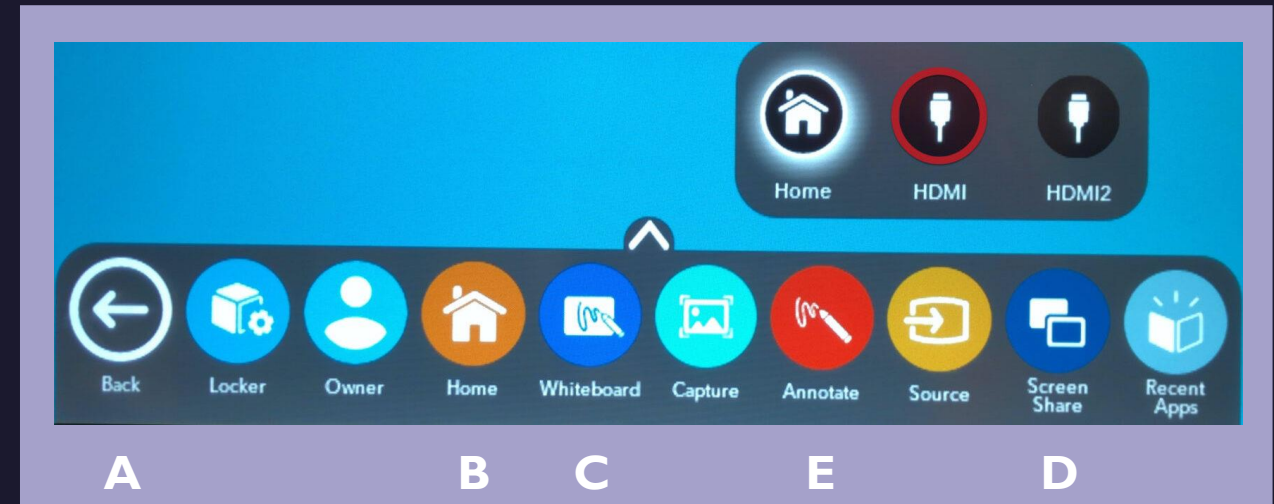
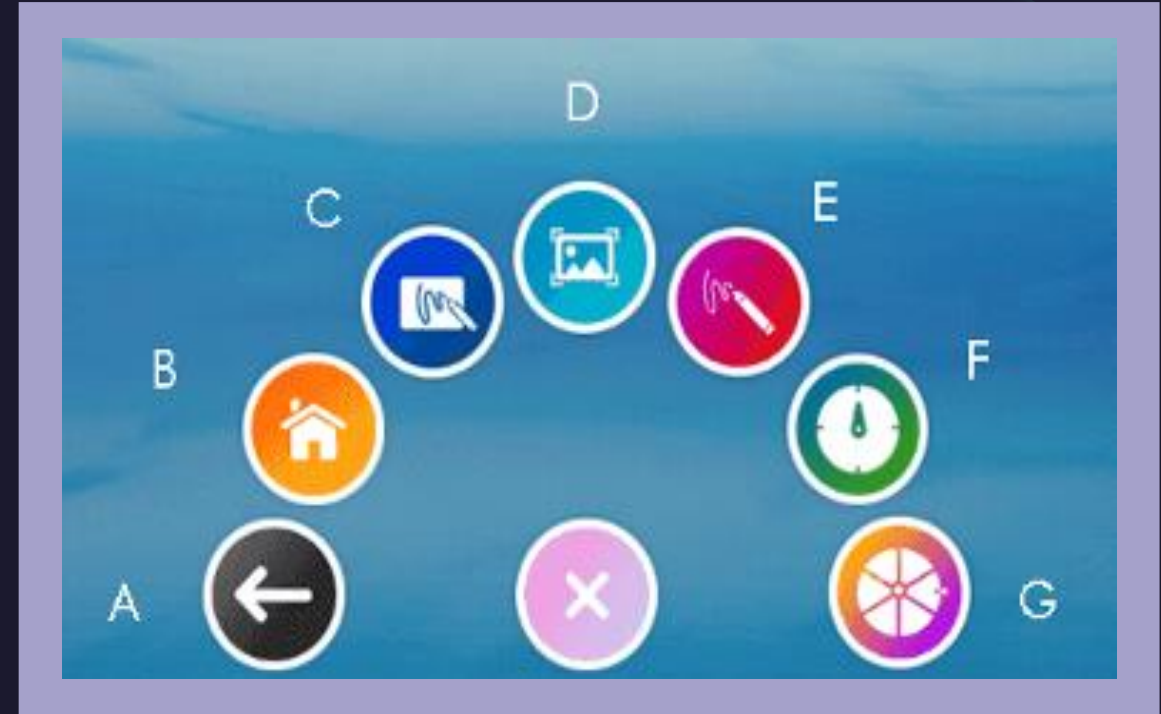
**C. Promethean Whiteboard** - provides a blank interactive canvas to draw or write on using

**D. Capture** - takes a screen shot of the item screen you are presenting, which is imported into the Promethean Whiteboard

**E. Annotate** - gives you built-in annotation tools that can draw or write on anything you are presenting

**F. Timer** - includes a timer, clock, and stopwatch feature

**G. Spinner** - spin to randomly select items from either the built-in or a personalized menu

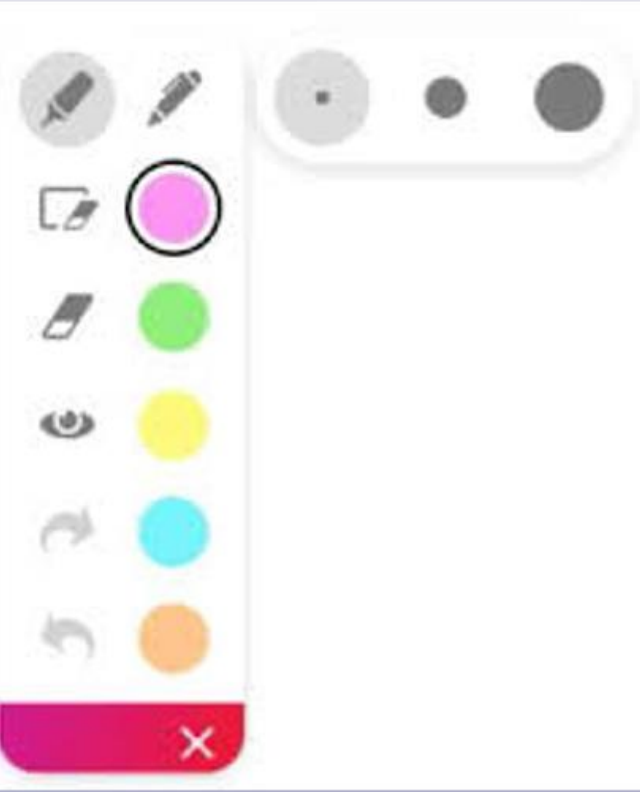


# Promethean Whiteboard

Use the Promethean Whiteboard tool when you need an interactive page to draw or write on. Various annotation and drawing tools are built-in for educators and students to utilize.

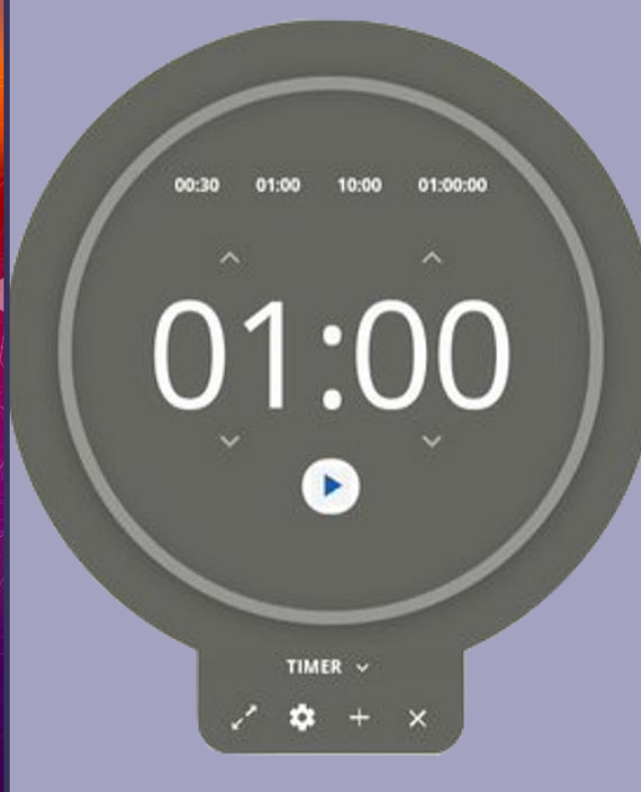






## Annotate

The annotate tool allows you to write on top of anything you are presenting outside of the Promethean Whiteboard feature.



## Timer

The timer tool allows you to display a timer, a clock, or a stopwatch for the entire class to see. To change which tool you wish to display just click the carrot above the gear icon and then select the desired tool.



## Spinner

The spinner tool allows you to use your finger to spin the wheel while it randomly selects an item for you. To change whether you want to display colors, names, numbers, or more just click the carrot above the gear icon and then select the desired display.

# Built-In Tools



# Promethean Capture

Use the Capture tool to take a picture from a website or other resource. This screenshot will be placed directly into the Promethean Whiteboard for you to annotate and manipulate.



# Cleaning Your Promethean Board



- Switch off the **ActivPanel** and disconnect the power cable.
- Shut down the attached computer and disconnect its power cable.
- Use a 100% cotton cloth or micro-fiber cloth for cleaning.
- Use only glass cleaner spray **ONLY** applied to micro-fiber cloth.

**\*\*\*NEVER** spray on the board itself

- Do not use abrasive cleaners.
- Do not apply too much pressure to the screen.